



ALL IN

THIS BOOK BELONGS TO: _____

**MOSES MY SERVANT IS DEAD.
NOW THEREFORE, ARISE, GO
OVER THIS JORDAN, YOU AND
ALL THIS PEOPLE,
TO THE LAND WHICH I AM
GIVING TO THEM—THE
CHILDREN OF ISRAEL.**

JOSHUA 1:2 NKJV

A NOTE FROM PASTOR TIM HOWEY

“There is coming a day when only two things will matter to us. First, we’ll want to hear Jesus say, “Well done,” because we followed Him. Second, we’ll want to meet all the people transformed by Christ because we stepped out in faith. I have been amazed how (unbeknownst to us) God used **ALL IN** in year 1 to prepare us to minister to people in need during COVID-19. In addition, God has grown us spiritually and impacted people for Christ. May God empower every one of us (like Israel in the book of Joshua) to trust Him completely, seek Him courageously and obey Him together. Let’s go **ALL IN** together again for year 2.”

SEPTEMBER 1996



Grace Church planted in
Graceway's basement

MARCH 1997



Grace Church moved to
Indian Valley Elementary

DECEMBER 2008 - FEBRUARY 2012



Launched 3rd, 4th & 5th services

OCTOBER 2015



Open phase 2 facility at
South Overland Park

SEPTEMBER 2018



Launched our North Overland Park
Campus and Real Community Church

SEPTEMBER 2019



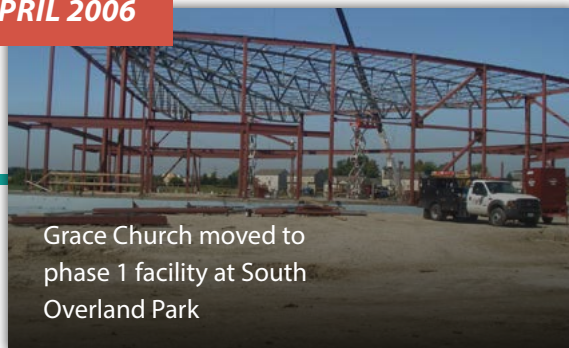
Launched The Rising Church and
Silo Community Church

JUNE 1999



Grace Church moved to Blue Valley Middle School

APRIL 2006



Grace Church moved to phase 1 facility at South Overland Park

AUGUST 2016



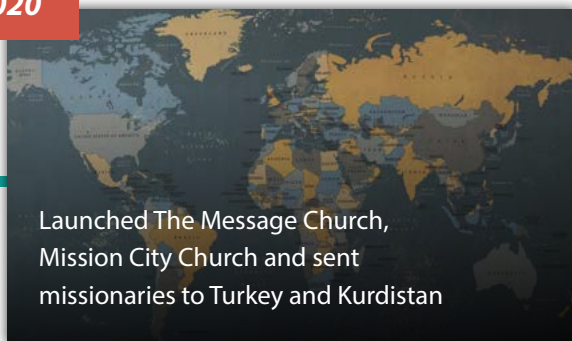
105 baptisms at our first ever "spontaneous baptisms"

FEBRUARY 2017



Launched our Olathe Campus

2020



Launched The Message Church, Mission City Church and sent missionaries to Turkey and Kurdistan

**CELEBRATING OUR HISTORY,
ALL IN FOR OUR FUTURE**

OUR PRIMARY GOAL THROUGH *ALL IN* IS THAT 100% OF PEOPLE AT GRACE WOULD FULLY ENGAGE IN THIS INITIATIVE TO EXPERIENCE A LIFE-CHANGING ENCOUNTER WITH GOD.

We are asking every person in every household at Grace to go *ALL IN* as we step out in faith together to pursue what God has for us. We want all of us to pray fervently, commit fully, cheer loudly, and give generously. If everyone does 100% of what God asks them to do, we will all grow as disciples and accomplish everything God has for us.

HOW WILL YOU RESPOND?

We are asking you to go on a spiritual journey with God and your family—to ask the Lord how He wants you to grow in generosity, listen, be open to take the biggest steps of generosity you’ve ever taken, and follow what He says.

1. PRAY FERVENTLY.

Pray like crazy that God would move in everyone’s heart to seek God fearlessly, follow Him courageously, and grow in generosity (i.e. more like Jesus).

*My Prayer for *ALL IN* is:*

2. COMMIT FULLY.

Help us reach our goal of 100% of people fully engaged in All In. Stand side by side with your church family. Commit to seek the Lord, listen and do whatever God asks. Put your “Yes!” on the table.

*My Commitment for **ALL IN** is:*

3. GROW INTENTIONALLY.

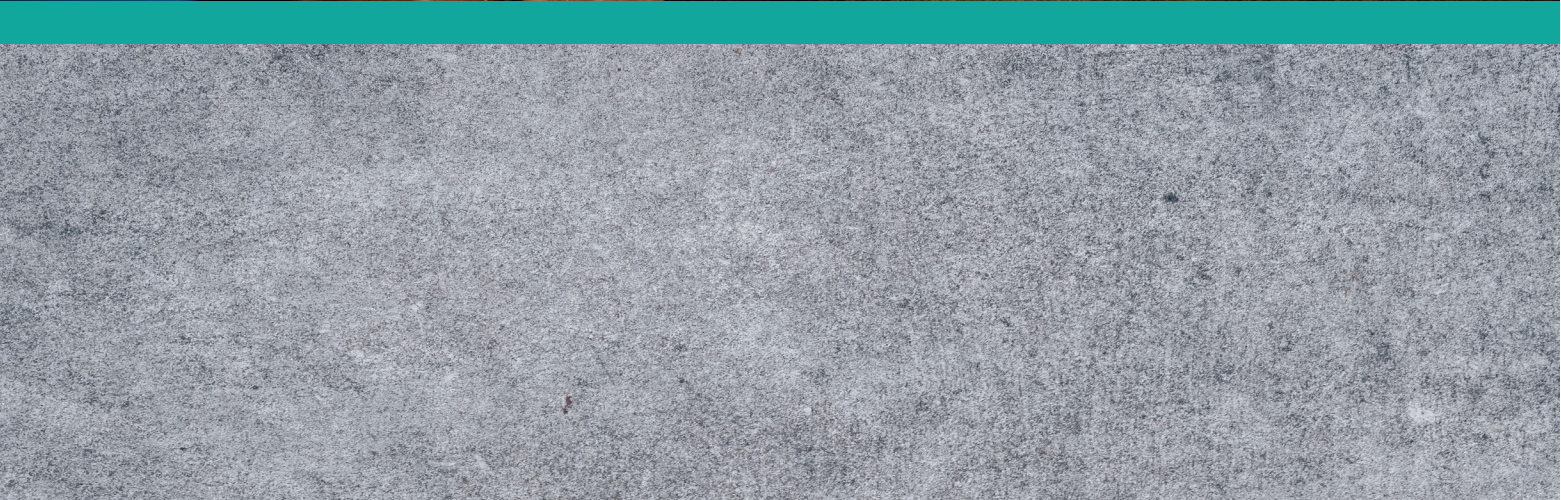
Attend each weekend service from October 24-25 through November 21-22. Engage in the All In study with your Grace Group or short-term Bible Study. Learn all you can about God’s heart and will for you and your resources.

*A Growth Area for me through **ALL IN** is:*

4. GIVE GENEROUSLY.

Ask God to show you what it looks like to give in a way that changes you. Take whatever steps are required to see it through.

*I can grow in generosity through **ALL IN** by:*



ALL IN GROUP STUDY

Not in a Grace Group?
Consider going
through the study
with someone else
(friend, spouse, family),
or contact the Grace
Groups Director at
your campus to get
connected to a group
or short term study.
If you are doing the
study on your own, you
can use the discussion
sections as personal
reflection moments.

START TALKING: Conversation Starters.

Get the conversation going in your group by discussing these questions that will help lead you into this week's content.

START THINKING: Ask Questions.

Get the group thinking by answering the questions provided. These are centered around the sermon series. If you didn't catch the service over the weekend, be sure to watch online at visitgracechurch.com/messages before attending the group.

START SHARING: Create Openness.

These questions are designed to create openness and transparency in the group. Your group needs to be a safe space. Be graceful to one another, and be sure to keep what is shared confidential.

START PRAYING: Be Bold.

Have someone read this prayer out loud for the group. Then take time in prayer together around its content. Let this become your prayer theme throughout the week.

START DOING: Take a Step.

Commit to live out what God is teaching you by Asking what He wants you to do, Listening for His voice, and Doing what He says.



WEEK 1.

CLEANSING ANY DISOBEDIENCE - ACHAN'S STORY

Check out this week's story video: visitgracechurch.com/allin

Key Passage: Joshua 7

SERMON NOTES:

START TALKING: Conversation Starters

Can you remember a time growing up when you were caught trying to hide something you shouldn't have? Share your story.

START THINKING: Ask Questions

How were you challenged from this week's message?

- Can you relate with Achan's story in any way? How so?
- Did your understanding of partial obedience change after hearing Achan's story? In what way?
- Ask God -- Listen -- Do That. If you have already made a commitment to **ALL IN**, share your experience of Asking, Listening, and Doing with the group.

How did it impact your life and your relationship with God?

How do you think this simple formula helped you fully obey God?

START SHARING: Create Openness

- Our theme for this series is Living in Victory. Do you have difficulty reconciling that idea with the year we are experiencing? Share your thoughts with the group.
- Do you believe it's possible to Live in Victory even when we are suffering defeat? How so?
- How would you define Living in Victory as it relates to your generosity?

START PRAYING: Be Bold

Father, thank you for the victory we have in the cross. Thank you for the forgiveness we have through your sacrifice. Please reveal any areas of our lives in which we are not fully obeying you. Give us the courage to Ask what your will is, to Listen for your voice, and Do your will so that we might live in your victory. In Jesus' name, Amen.

START DOING: Take a Step

Therefore, having these promises, beloved, let us cleanse ourselves from all filthiness of the flesh and spirit, perfecting holiness in the fear of God.

2 Corinthians 7:1 NKJV

He who covers his sins will not prosper, But whoever confesses and forsakes them will have mercy.

Proverbs 28:13 NKJV

If we confess our sins, He is faithful and just to forgive us our sins and to cleanse us from all unrighteousness.

1 John 1:9 NKJV

- Ask God, Listen, Do That. This is how Joshua handled the situation with Achan. This week, set aside time to:
 - **Ask** - "God, am I fully obeying you in all areas of my life, including my generosity? Are there any hidden sins that need to be exposed, am I keeping back what belongs to you?"
 - **Listen** - allow the Holy Spirit to reveal anything that needs to be confessed.
 - **Do** - confess your sins to God and ask him to cleanse you. Share what you are comfortable sharing with your group and ask them to pray for you. (James 5:16)



WEEK 2.

FIGHTING OUR ENEMIES - THE CONQUEST

Check out this week's story video: visitgracechurch.com/allin

Key Passage: Joshua 8-12

SERMON NOTES:

START TALKING: Conversation Starters

_____ is the enemy to _____.

How would you fill in the blanks? Explain your response to the group.

START THINKING: Ask Questions

How did this week's message change the way you think about spiritual warfare?

- As followers of Jesus, we have three natural enemies to Living in Victory: the world, the flesh, and the devil. In what ways do you experience resistance or attack from these enemies?
- Jesus defeated your enemies on the cross. How does this knowledge shape your perception of them?
- What does it look like to practically fight the good fight of faith for yourself and others?
(1Timothy 6:11-12)

START SHARING: Create Openness

- The formula for victory = Ask God...Listen...and Do that. Joshua's army suffered defeat at Ai and Gibeon because of a breakdown in this process.
- Can you remember a time when you experienced defeat as a result of Not Asking God...Not Listening to God...or Not Doing what God said?
- Do you consider generosity as a way for you to fight the good fight and defeat your enemies? Why or why not?
- Are you experiencing victory or defeat when it comes to generosity? In what way?

START PRAYING: Be Bold

Father, thank you for loving us and fighting for us. Thank you for sending your Son to defeat our enemies at the cross. Help us fight the good fight for ourselves and others by believing and obeying your truth. Give us the courage to trust you when we fail, and the grace to humbly live in your victory. In Jesus' name, Amen.

START DOING: Take a Step

- Fight for yourself and others in prayer this week:
 - Pray through Psalm 64 for yourself and the members in your group.
 - Pray each day for someone you know who is far from God to be brought into a relationship with Him.
- Set aside time this week to:
 - **Ask** - "God, how are my enemies holding me back from the type of generosity You are leading me to"?
 - **Listen** - for God to reveal how the world, your flesh, or demons are fighting against you and His will for your life.
 - **Do** - believe the promises of God:
 - God has overcome the world - John 16:33
 - The flesh is crucified with Christ - Galatians 5:24
 - Jesus triumphed over our enemies - Colossians 2:15
 - Ask your group to pray specifically for you in these areas.



WEEK 3.

LIVING OUT GOD'S WILL - THEIR INHERITANCE

Check out this week's story video: visitgracechurch.com/allin

Key Passage: Joshua 13-17

SERMON NOTES:

START TALKING: Conversation Starters

Do you ever experience FOMO (Fear Of Missing Out)? Over what?

Can FOMO be a good thing? In what way?

START THINKING: Ask Questions

What new thing did you learn from this week's message?

Read Hebrews 3:7-4:7 together and discuss:

- What was God's will for his people in Joshua's day? What kept them from living out His will?
- What is God's will for his people today? What keeps us from living out His will?
- What's your experience when you are living out God's will? And when you're not?

START SHARING: Create Openness

- “Enter into God’s rest” - take a moment to consider that phrase. What feelings begin to surface as you meditate on it?
- How do you personally enter into God’s rest? What does that look like for you? Has it been different this year?
- Do you feel like you’re experiencing the rest of God in the area of generosity?
 - If so, in what ways? Do you feel like there is still room for growth in this area - is there any “land you have not possessed”?
 - If not, what is keeping you from entering into His rest financially?

START PRAYING: Be Bold

Father, thank you for providing a rest for our souls through your promises. Please give us the faith to enter into your rest and possess the life you have for us in all areas - including generosity. Please reveal any area of our lives where unbelief or fear is keeping us from living out your will and experiencing your rest. In Jesus’ name. Amen.

START DOING: Take a Step

Therefore, since a promise remains of entering His rest, let us fear lest any of you seem to have come short of it.

Hebrews 4:1 NKJV

"Today, if you will hear His voice, Do not harden your hearts."

Hebrews 4:7 NKJV

Let us therefore be diligent to enter that rest, lest anyone fall according to the same example of disobedience.

Hebrews 4:11 NKJV

- God has a place of "rest" he is calling us to - a place where we are living out His will. Are you experiencing God's rest?
- Living according to his promises requires faith and obedience. If we're willing to Ask what His will is, Listen for His voice, and Do what He says...we will experience His rest.
- This week, take time to:
 - **Ask** - "God, am I living out your will and experiencing your rest in every area of my life? In what ways am I coming short of it?"
 - **Listen** - for God to speak and don't harden your heart.
 - **Do** - make intentional plans to align yourself with God's will so that you can experience the rest He is calling you to. Share your plans with your group next week.



WEEK 4.

FINISHING WHAT GOD WANTS - THE PROCRASTINATORS

Check out this week's story video: visitgracechurch.com/allin

Key Passage: Joshua 18-21

SERMON NOTES:

START TALKING: Conversation Starters

Would you say you are better at starting projects or finishing them? (Okay...how would those who know you best answer that question?)

What effect has the pandemic had on your approach to life - more proactive or procrastinator?

START THINKING: Ask Questions

What stood out to you most from this week's message?

- Do you ever find yourself satisfied with living life day to day instead of pursuing God's plan for you? Why do you think that is?
- What do you think you might be missing when you put off living the life God has called you to?
- Read Psalm 119:59-60 together. How do you think this should be applied to your time... relationships...abilities...finances?

START SHARING: Create Openness

- What emotions do you experience when you consider going ALL IN with God and his plans for your life...specifically in the area of generosity?
- Joshua didn't want his people to miss out on God's best for them. He encouraged them to finish what He asked them to do and take possession of what He had given them.
- Who do you know that needs a "Joshua" in their life? Who can you encourage this week to press forward in their faith and go ALL IN with God?
- Our "Joshua" (Jesus) is a finisher - see John 17:4, 19:30. He set the example for us to follow. Is there anything you feel like God has called you to do that you need to finish? What can your group do to encourage you to finish?

START PRAYING: Be Bold

Father, thank you for loving us and waiting patiently on us to follow you. Forgive us for procrastinating when we know what we should be doing. Thank you for the "Joshua's" in our lives that encourage us to move forward in our faith. Please give us the grace and courage to go ALL IN with you and possess the life you have procured for us. Help us to finish the things you ask us to do. In Jesus' name. Amen.

START DOING: Take a Step

Have you finished what God wants you to do in the area of generosity? Or, have you settled for less than what God has for you?

Commitment Card: In last weekend's sermon, pastor Tim introduced the Commitment Card. This week, set aside time to pray about your commitment to ALL IN. Then, take one the following steps:

1. If God led you to make an ALL IN commitment last year, are you praying and working to finish it?

Whether you are on track or you've been procrastinating - this week, set aside time to...

- **Ask** - "God, am I doing all you want me to do? Is there anything more I should be doing in the area of generosity?"
- **Listen** - for what God is saying to you.
- **Do** - what God says. Thank Him for guiding you, and fill out your Commitment Card (even if there is no change).

2. If this is your first experience with ALL IN, set aside time this week to earnestly and sincerely...

- **Ask** - "God, what would you have me do in the area of generosity?"
- **Listen** - for God to speak to you
- **Do** - what God says. Surrender to Him, trust Him, and commit to finishing what He wants you to do. Thank Him for guiding you, and fill out your Commitment Card.

Bring your completed Commitment Card with you to service this weekend or go to visitgracechuch.com/allin to fill out and send in digitally. Then be sure to watch this weekend's service online. This is going to be a moment in the life of Grace Church that you do not want to miss!

MAKING AN ALL IN COMMITMENT:

Exercise and reflection to do at home prior to Commitment Weekend.

1. List out the resources God has already given you (savings, investments, retirement, property, collections, assets, etc.)
2. List out the financial commitments you currently have—those that go beyond a one-time payment and have a time duration to them. Examples would be a home mortgage, a lease agreement, a car loan, a cell phone contract, your child's tuition for school, your own tuition for school, etc.
3. Now, write out the commitment you are planning to make for All In. Where does it fall in the priority of these other commitments? Do you need to change or modify one or more of these other commitments in order to be able to fulfill your All In commitment? What if you wanted to raise your All In commitment? What would that require? Is there a financial commitment you currently have that appears to be prioritized above your ability to make a truly surrendered giving commitment? With your current priorities, are you fully engaged with God's mission of helping people take their next step with Christ?
4. If someone who didn't know you looked at your financial commitments, what would they say you value?
5. Would that statement be true about you? Or, is there something that needs to be explained or modified?
6. If you keep this commitment over the next year (or 13 months, starting December 1, 2020), what spiritual transformation will occur in you?
7. How will you leverage this change to influence others such as your children, your co-workers, your friends, your family, or others in your circles of influence?

Pray over your commitment as you prepare to bring your card on Commitment weekend, November 21/22. Prayer is the most important thing in this whole process, and prayer is what gives us the bold heart of Christ within us.

Let’s do this! Let’s be people boldly surrendering themselves to God in every area of their lives and declaring, “I’m All In!”

MY / OUR ALL IN “REFRESH” COMMITMENT

☐ I/we previously made a 25-month commitment to ALL IN

☐ I/we confirm my/our commitment and intend to finish strong!☐ I/we would like to increase our original 25-month total commitment to:
\$

☐ I/we would like to make a new 13-month commitment to ALL IN.

Over the next 13 months, I/we commit a total of:
\$

NAME(S) EMAIL(S)

ADDRESS CAMPUS

COMMENTS:

☐ Contact me - I have a story to share!

You may think your gift doesn't matter when compared to our total goal for All In. It does matter! Every gift matters to God. It's not about the amount, but what that amount means to you. (Mark 12: 41-44)
Use this table to see how your monthly gift adds up over 13 months!

| 13 MONTH GIFT CHART | |
|----------------------------|---------------------------|
| MONTHLY GIFT OF | OVER 13 MONTHS |
| \$10 | \$130 |
| \$25 | \$325 |
| \$50 | \$650 |
| \$100 | \$1,300 |
| \$250 | \$3,250 |
| \$500 | \$6,500 |
| \$750 | \$9,750 |
| \$1,000 | \$13,000 |
| \$2,000 | \$26,000 |
| \$5,000 | \$65,000 |
| \$10,000 | \$130,000 |
| \$20,000 | \$260,000 |
| \$50,000 | \$650,000 |





WEEK 5.

LOVING GOD THE MOST - JOSHUA'S FAREWELL

Check out this week's story video: visitgracechurch.com/allin

Key Passage: Joshua 22-24

SERMON NOTES:

START TALKING: Conversation Starters

Someone once said that “what consumes your mind, controls your life”.

Do you think that’s true? What consumes your mind?

START THINKING: Ask Questions

How were you encouraged from this week’s message?

- What does it look like for you to “love God most” on a practical level?
- What does it look like to love God most with your finances?

START SHARING: Create Openness

- Israel had a problem with worshiping idols while trying to worship God at the same time. Jesus said you can't love God and money (Matthew 6:24).
- What are some modern day idols we worship in our culture today?
- Is it possible for us to be in the place God wants us while still worshiping "idols"? Why or why not?
- Do you believe an unwillingness to be generous can be an idol that keeps us from loving God most? Why?
- Again, we see Joshua encouraging the people to pursue God and his perfect will for their life.
- What are some ways that we can be "Joshua's" for one another?
- What are some things you need from a "Joshua" in the group to regularly encourage you to love God the most?

START PRAYING: Be Bold

Father, thank you for loving us most. Thank you for loving us so much that you gave your life to be with us. Forgive us for our idols and please give us the strength to get rid of them and surrender our lives to you alone. You are worthy of our worship, love, and our obedience - help us to honor you in every aspect of our lives and follow your example of love and generosity. We love you Jesus. Amen.

START DOING: Take a Step

Joshua encouraged people to follow God so that they might live in His rest. Do you know someone who doesn't know God that He might want you to share Jesus with?

This week, take time to:

- **Ask** - "God who do you want me to share Jesus with this week?"
- **Listen** - for the first person God brings to mind.
- **Do** - what He says by reaching out to them to share your faith.

If you haven't made your commitment to **ALL IN**, it's definitely not too late. Our prayer from day one has been that every person at Grace would engage with us on this journey. You can fill out your commitment card anytime online at visitgracechurch.com/allin.

Live in Victory! Enter into the rest God has for you. In everything, continue the lifelong habit of Asking God what He wants you to do, Listening for His voice, and Doing what He says. May God bless you in all that you do.

ALL IN BREAKDOWN

PRIMARY GOAL: 100% FULLY ENGAGED

We are asking every person in every household at Grace to go **ALL IN** as we step out in faith together to pursue what God has for us. We want all of us to pray fervently, commit fully, cheer loudly, and give generously. If everyone does 100% of what God asks them to do, we will all grow as disciples and accomplish everything God has for us.

ALL IN is first and foremost a discipleship initiative. We're all at different points of growing spiritually into the image and character of Jesus Christ.

We want to learn new things about God and about ourselves. We want every single person at Grace to ask God for direction about this generosity, listen to Him, go All In and to be willing to take a next step of growth in this area of generosity.

Whether you've never given before, you're an occasional giver, or you're a consistent and thoughtful giver, there is a next step God is asking all of us to take in this journey.

SECONDARY GOAL: \$21.7M

We are encouraging everyone to seek and follow God about investing financially in the ministries of Grace. We are asking God to grow people in generosity and fund our ministries, outreach, church planting, and facilities for greater ministry impact. God has transformed so many lives and we are trusting Him for so much more.

Our secondary goal is funding our vision. This is a one fund initiative, so the amount includes our total ministry fund for the next two years (All In for Ministry), our desire to meet more practical and spiritual needs in our community and around the world (All In for Outreach), and our new church facility in Olathe and renovated basement in North Overland Park (All In for Facilities),

If 100% of people at Grace fully engage in what God is doing, we expect to see an increase in generosity (time, service, finances) like we've never seen before.

DURING 2020-2021 AT GRACE:

Last year (based on giving data), we projected Grace Church would receive \$14.1 million in tithes and offerings to support the vision and ministries of our church. The ALL IN initiative is intended to prompt ALL of us to seek the Lord and follow Him in new ways that challenge us to grow and see lives transformed. As a result, we hope to raise an additional \$7.6 million over two years for a two-year goal of \$21.7 million.

ALL IN FOR MINISTRY

\$13.7 MILLION

- Supplement our current ministries of Grace that transform people at all campuses (weekend services, kids, students, groups, studies, camps, special needs, etc.).
- Expand our capacity to train the next generation of disciples by staffing to minister to thirty percent more kids and students and equip them to stand firm in Christ.
- Equip more people to become outward focused followers of Jesus by implementing a Growth Path to help everyone Connect at Grace, Grow in Jesus, and Go make disciples.

During 2020-2021, we desire to allocate \$13.7 million for our ministries.



ALL IN FOR OUTREACH

\$2.2 MILLION

- Expand our partnership with ministries to the homeless, hungry and under-resourced around Kansas City to share the love of Jesus.
- Fund six to twelve new church plants (independent from Grace Church) by recruiting, developing and sending leaders to make new disciples nationally and internationally.
- Grow our investment in global missions and unreached people groups and support Bible translation among people groups without access to Scriptures.

Over the next two years, we desire to allocate \$2.2 million for outreach.



ALL IN FOR OUR FACILITIES

\$5.8 MILLION

- Lease a space at 151st & Pflumm to provide an interim meeting location for our Olathe campus due to the impact of COVID-19.
- Continue planning to reach the Olathe community by building a new church facility on our property at 167th and Mur-Len. This will include a 400-450-seat auditorium for use by our adults and students, a Grace Kids ministry space, cafe, etc.
- Update the North Overland Park campus to have a multi-purpose ministry space for medium to larger sized gatherings for kids, students, and adults.

During 2020-2021, we desire to invest \$5.8 million for these facility projects.





**WELCOME TO
GRACE CHURCH**

5 NEXT STEPS IN A LIFE OF GENEROSITY

These stages focus on behaviors and attitudes of our hearts—our discipleship—rather than on amounts or percentages. Each step represents growth in a lifestyle of generosity and sacrifice that transforms us into the likeness of Christ who gave up everything.

STEP #1: INITIAL GIVER

An Initial Giver is someone who decides to give for the first time, out of a response to God's Word about giving. This is someone who decides to give something and trust God and use this gift to minister to people.

STEP #2: CONSISTENT GIVER

A Consistent Giver is someone who commits to give on a regular basis. Consistent Givers start to think of their giving in the same way they think about other budget expenses that are always paid, regardless of seasons of plenty or want. They often set up an online recurring gift to help.

STEP #3: INTENTIONAL GIVER

Intentional Givers think about giving in relation to other things they spend their money on: "Why do I give the cable company or my cell provider more money than I give to God?" They consider a percentage or amount they want to commit to in order to consciously grow in their generosity. Intentional Givers look at their budget and consider how their giving reflects their view of God and commitment to His Kingdom. This may also be the point when someone begins to tithe (i.e. give 10% of their gross incomes), which is being intentional about a certain amount or percentage that they want to give to God.

STEP #4: SURRENDERED GIVER

A Surrendered Giver is someone who recognizes the cost Christ paid on the cross for us and is surrendered to honoring God with 100% of their resources as a result. A Surrendered Giver gives in a way that changes them. Their giving governs their spending/saving rather than having their spending/saving govern their giving. A Surrendered Giver isn't concerned with what they ARE giving but more concerned with what they're NOT giving and why. They seek to honor God with 100% of what He has given them, whether direct monetary giving or a God-honoring use of an existing resource like a home or a vehicle.

STEP #5: LIFETIME GIVER

A Lifetime Giver is someone who thinks about the long-term effects of generosity rather than month-to-month, or even year-to-year, generosity. A Lifetime Giver makes decisions in the short-term that have longer-term effects as it relates to their generosity capacity. They think of what home they buy, what car they purchase, and how much savings they choose to keep all in relation to their generosity capacity. A Lifetime Giver might be someone who has a lifetime giving goal that governs their larger-ticket decisions. Much like a Surrendered Giver makes a commitment that will govern his/her monthly and annual decisions, a Lifetime Giver makes a lifetime or longer-term giving commitment that governs his/her larger-item purchases like homes, cars, investments, etc.



WHAT IS A ONE FUND INITIATIVE?

You may have been part of church capital campaigns in the past where you were asked to give a second gift “above and beyond” your usual gifts to complete special projects. At Grace these have been used to make new buildings and ministries possible. Normally, you gave that gift to the “Building Fund” or “Ultimate Investment” and you also continued to give to the “General Fund.” This type of giving is potentially confusing to people who either don’t have a baseline for their “usual giving” or who aren’t able to really celebrate the total giving at Grace in one single number. We believe we’re all on ONE MISSION—to passionately share the message of Jesus Christ and lead people to follow Him.

The All In Initiative will last just over two years (25 months) from December 2019 - December 2021. In those 25 months, every gift given to Grace will go to the All In Initiative—to help us go All In for Ministry, Outreach, and Facilities.

PRIMARY GOAL: 100% FULLY ENGAGED

We are asking every person in every household at Grace to go ALL IN as we step out in faith together to pursue what God has for us. We want all of us to pray fervently, commit fully, cheer loudly, and give generously. If everyone does 100% of what God asks them to do, we will all grow as disciples and accomplish everything God has for us.

SECONDARY GOAL: \$21.7M

We are encouraging everyone to seek and follow God about investing financially in the ministries of Grace. We are asking God to grow people in generosity and fund our ministries, outreach, church planting, and facilities for greater ministry impact. God has transformed so many lives and we are trusting Him for so much more.

DURING THE TWO YEARS OF ALL IN AT GRACE:

Our current annual giving is approximately \$7 million, multiplied by two years is \$14 million. So, in essence, we're believing God to grow our resources by a little more than \$3.3 million per year for a total of \$21.7 million. At the conclusion of the ALL IN initiative, we project Grace Church would receive \$14.1 million in tithes and offerings to support the vision and ministries of our church. The ALL IN initiative is intended to prompt ALL of us to seek the Lord and follow Him in new ways that challenge us to grow and see lives transformed. As a result, we hope to raise an additional \$7.6 million over two years for a two-year goal of \$21.7 million.

TWO YEAR GOAL \$21.7M

(an additional \$7.6M over two years)

MY / OUR ALL IN "REFRESH" COMMITMENT

☐ I/we previously made a 25-month commitment to ALL IN

☐ I/we confirm my/our commitment and intend to finish strong!

☐ I/we would like to increase our original 25-month total commitment to:

\$ _____

☐ I/we would like to make a new 13-month commitment to ALL IN.

Over the next 13 months, I/we commit a total of:

\$ _____

NAME(S): _____

EMAIL(S): _____

ADDRESS: _____

CAMPUS: _____

COMMENTS: _____

☐ Contact me - I have a story to share!

13 MONTH GIFT CHART

| MONTHLY GIFT OF | OVER 13 MONTHS |
|--------------------|-------------------|
| \$10 | \$130 |
| \$25 | \$325 |
| \$50 | \$650 |
| \$100 | \$1,300 |
| \$250 | \$3,250 |
| \$500 | \$6,500 |
| \$750 | \$9,750 |
| \$1,000 | \$13,000 |
| \$2,000 | \$26,000 |
| \$5,000 | \$65,000 |
| \$10,000 | \$130,000 |
| \$20,000 | \$260,000 |
| \$50,000 | \$650,000 |

We've included a sample commitment card so you can see how a "one fund initiative" works. Please take the time to fill this out, but don't worry: You'll get a shiny new one to submit on Commitment Weekend, November 21/22.

***CREATIVE WAYS
TO GROW
IN YOUR
GENEROSITY***





Generosity Initiatives rely on church members making gifts that expand and accelerate their current level of giving. The best path to increased giving is the spiritual path, where you set your heart on things above. Financial priorities then take shape from the spiritual priorities.

One way of defining this is “Lifestyle Stewardship,” a term used to describe a level of giving that affects one’s living. The challenge of Lifestyle Stewardship is to find ways, boldly and prayerfully, to let your giving touch your living!

King David declared, “I will not sacrifice to the Lord my God burnt offerings that cost me nothing” (2 Samuel 24:24 NIV). David understood the gift that would touch the heart of God must first touch the heart of the giver! This is the spirit of Lifestyle Stewardship: If it is for my God, my gift must have value and meaning to me.

Often, Lifestyle Giving means giving up something in one area so that you can give more of yourself in another. The three keys to effectiveness in Lifestyle Stewardship are:

- Reassess lifestyle
- Rearrange priorities
- Reallocate resources

Many believers have been amazed at their ability to give more generously to their church. The following seven steps are offered to help you in this regard.

1. PRACTICE PRIORITY BUDGETING

Many families will choose to rearrange their priorities and give up something in their current budget in order to give more to a generosity initiative. Priority budgeting may mean postponing a planned expenditure such as a new car, vacation, home remodeling, or other major purchase. Many Christians giving to capital stewardship campaigns find a way to give through sacrificial commitments made in faith and coupled with priority budgeting.

2. REDIRECT PRESENT EXPENDITURES

Often, families have significant short-term expenditures for special needs. One example is the large expenditure a family incurs for a child to attend college. A family realized that their daughters would be graduating from college during the two years of the generosity initiative and, as a result, they were able to increase their commitment to the second year of the campaign by thousands of dollars by giving what they had been spending on their daughters' tuition. Another example would be the cash flow that is freed up when a loan is paid off.

3. INCREASED GIVING WITH INCREASED INCOME

Some people receive periodic increases in salary or bonuses from their employers. The temptation for many of us is to increase our lifestyle to fit the higher income. In many instances, families have decided that they will commit the full amount of salary increases.

4. GIVE FROM YOUR EXCESS

A young man decided that two collectors' baseball cards worth over \$20,000 he had been holding for a number of years would be the most appropriate means of touching sacrifice for his family. Some families save money over a period of years for a special project. A couple had saved \$80,000 to build a lake cabin. When their church entered a generosity initiative, they decided the needs of the church were greater than their need for a second home.

5. COMMIT UNEXPECTED CASH

Often, people pray for God to show them a way they can give beyond what they can presently see or afford. Sometimes, the answers come unexpectedly. A couple had been praying for weeks about their commitment to the church generosity initiative. Much to their surprise, they received an inheritance of several thousand dollars. They gave the entire amount to their church as part of their two-year commitment, in addition to a commitment from their regular income.

6. SACRIFICE YOUR EXTRA TIME

Some family members have extra time they would be willing to use in a part-time job to be able to give more to the church. This is particularly true for families whose children are grown and away from home and for semi-retired or retired couples. A man was in the process of retiring when his church entered a campaign. He and his wife secured new jobs and gave the first two years of their retirement income to the generosity initiative.

7. DONATE APPRECIATED ASSETS (STORED RESOURCES)

Many people own stocks that are worth significantly more than the original purchase price. That is good news. The bad news is that if these stocks are sold, a significant portion of the gain would be lost to taxation.

Gifts of appreciated assets—typically investment securities or real estate—can be very advantageous to both the donor and to the church. By transferring ownership of the asset to the church, the donor avoids capital gains taxes on the sale of the asset. In addition, the donor receives an income tax charitable deduction for the full market value of the asset. That, in effect, makes these gifts less costly to make.

| | Sell asset and gift net proceeds | Give asset directly |
|---|----------------------------------|---------------------|
| Value of Asset | \$12,000 | \$12,000 |
| Original Purchase Price | \$3,000 | \$3,000 |
| Amount of Appreciation | \$9,000 | \$9,000 |
| Capital Gains Tax* | \$2,340 | \$0 |
| Proceeds to Church (asset value minus taxes) | \$9,660 | \$12,000 |

*Assumes 12-month holding period, 15% capital gains tax, 6% state income tax rate.

Though it is important to invest your giving to further the mission of the ministry God has laid on your heart, it is also important to consider the tax implications of making a gift to the church. Before making a commitment of this type, please consult your CPA, tax attorney, or other financial advisor.

A FINAL WORD

Giving does not have to be in equal increments over the two-year period of the initiative. You might be able to give more in the second year than in the first. As you think about your financial commitment to the initiative, think not just of your potential to give right now, but also of your potential to give in the future. It might be that you can make a two-year commitment in which 35-40% is given in the first year, and 60-65% is given in the second year.

Finally, as you consider your financial commitment to the Lord's work, you might want to consider estate planning. Many sincere, committed Christian people have not made provision for God in their wills and estate planning. Now might be a good time to do that. It might be as simple as including a provision in your will that 10% of the value of your estate will be donated to your church at the time of your passing. Or, it could involve a planned gift such as a charitable remainder trust. While such gifts do not provide immediate financial benefit to a generosity initiative, they are marvelous gifts of faith commitment to carry on the work of the church for future generations.

FREQUENTLY ASKED QUESTIONS

WHAT ARE YOU ASKING ME TO DO?

First and foremost, we are asking that you pray and seek God's direction on what He is asking of you. Prepare your heart to hear Him and then listen to what He says. Take your next step. Engage in personal reflection with God in this guide. Talk with your spouse, your family, or others about what this commitment will mean for this next exciting season of your life.

We are asking that you make a sacrificial commitment to gospel-centered generosity—whatever it is that God leads you to do. Follow His leading.

Finally, we ask that you prepare to be amazed. We serve an awesome God, and He is going to move in huge ways. We anticipate an unprecedented impact from our collective All In commitments—something only God can do. Please mark your calendar for Commitment Weekend, November 21/22 and prepare to experience a life-changing worship service that will forever be remembered as a defining moment for our church and our own faith.

HOW IS ALL IN DIFFERENT FROM PREVIOUS GENEROSITY INITIATIVES?

We are more focused on everyone at Grace seeing their giving as an integral part of the discipleship process and then being challenged by God to take a next step. The bulk of this notebook is focused on helping us dig into some key Biblical principles that guide us in this area as we follow Jesus. This is our first priority—100% fully engaged in the process. Even if someone wrote us a check today for our secondary goal of \$21.7 million, we would still do this initiative. Whether we're just starting in our giving journey or we're very committed givers, we all have a next step to take and room to grow in this area.

HOW DOES OUR CURRENT GIVING AT GRACE COMPARE TO OUR \$21.7M GOAL?

Our current annual giving is approximately \$7 million, multiplied by two years is \$14 million. So, in essence, we're believing God to grow our resources by a little more than \$3.3 million per year for a total of \$21.7 million. At the conclusion of the All In initiative, we project Grace Church would receive \$14.1 million in tithes and offerings to support the vision and ministries of our church. The ALL IN initiative is intended to prompt ALL of us to seek the Lord and follow Him in new ways that challenge us to grow and see lives transformed. As a result, we hope to raise an additional \$7.6 million over two years for a two-year goal of \$21.7 million.

ARE THERE ADDITIONAL WAYS BESIDES CASH THAT I CAN GIVE TOWARD ALL IN?

Be creative as you explore ways you and your family can give toward All In. You might have some stocks, property, or other items of that nature. Or you may have stored resources that God has blessed you with in the past that He just might be calling you to give during this time. Please let us know if you need assistance with facilitating gifts of property or stock, and we would be happy to help you. Tammy Bodine, our Accounting Manager (tbodine@visitgracechurch.com) is able to assist with all such gifts.

WHAT IF I HAVE NEVER EVEN GIVEN TO GRACE BEFORE?

All In was crafted specifically with you in mind. All In is a "one fund" generosity initiative. It's different from a traditional capital campaign where you are called to give an extra gift above and beyond your normal giving, thus creating two steps for people who aren't yet giving. All In is a call to sacrificial, gospel-centered generosity for absolutely everyone at Grace. If you have never given before, this is your chance to get in the game with generosity. We really hope you will.

WHAT IF I AM NEW AROUND HERE?

All In is about the vision for our church and our personal discipleship in giving as followers of Jesus. We believe that the local church is one of the most compelling missions to give toward, and we would really love for you to make Grace your home and join us in All In. If you are ready for it, this is a perfect time for you to put a stake in the ground and make this your church.

WHAT IF I DON'T HAVE A JOB RIGHT NOW? WHAT DOES THAT MEAN FOR MY ALL IN COMMITMENT?

All In is about your total, radical, sacrificial generosity to God's mission at Grace. We believe that God calls us to seek the Lord about our generosity in times of hardship just as much as He does in times of abundance. That looks different for every person. All In is about a heart change—one that is only accomplished by surrendering our lives completely over to God in this area of giving and declaring that we are a people who are unfinished.

Ask God for wisdom. Listen for His response. Share what God is prompting you to give. Seeking God and following Him is the win!

That may mean that you are being challenged to sell things, to pick up odd jobs, or even to trust God in faith by making a commitment that you don't quite know how to fulfill right now but that you believe God will provide for, as you seek for ways to work towards that commitment. We would like for 100% of us to be a part of All In so that we can all be supporting, loving, encouraging, and praying for one another through this spiritually-stretching season at Grace.

WHAT IF I AM SEVERELY IN DEBT RIGHT NOW? AM I STILL SUPPOSED TO GIVE?

If you are trying to pay off debt right now, we commend you for that. You should continue to do so. We would be happy to help you in this journey and/or to recommend a budgeting class (like Financial Peace University) that might minister to you. Being in debt does not mean you shouldn't be generous. It is a joy and privilege to give at all times. Please visit with our Grace Care Team if you need assistance with this or if you would like to speak with a budgeting counselor. We would be honored to help you!

Learn more online at: visitgracechurch.com/allin



ALL IN UPDATE

\$21.7M

ALL IN
TWO-YEAR GOAL

\$21.07M

COMMUNICATED
COMMITMENTS

As of 9/27/2020, we are currently tracking 8.3% or \$710K behind our current All In commitments of \$21.07M.

To meet our full goal of \$21.7M, we hope to raise an additional \$1.4M to close the gap.

STAY TUNED!

Stay-tuned for monthly updates regarding the All In initiative. Scan or head over to visitgracechurch.com/allin.





visitgracechurch.com